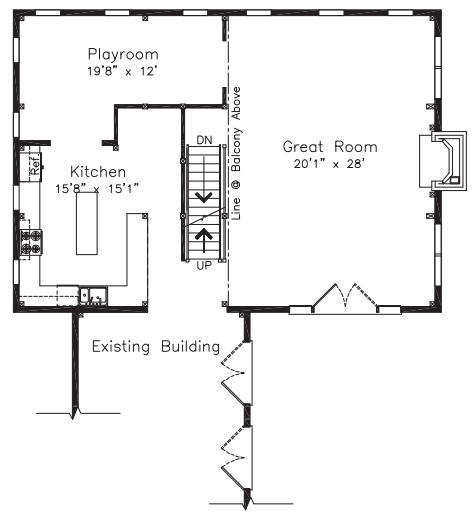




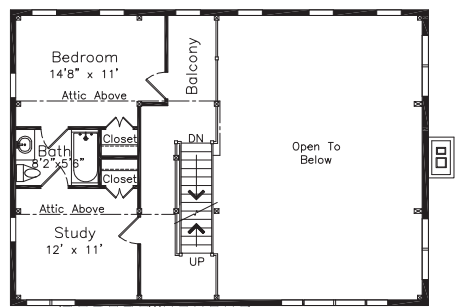
# THE MONT VERNON

ADDITION SQUARE FOOTAGE: 3035\*  
 BEDROOMS: 2\*  
 BATHS: 1\*

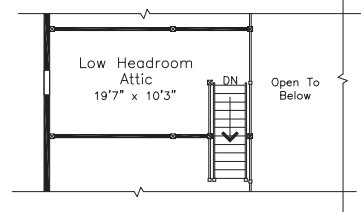
FIRST FLOOR



SECOND FLOOR

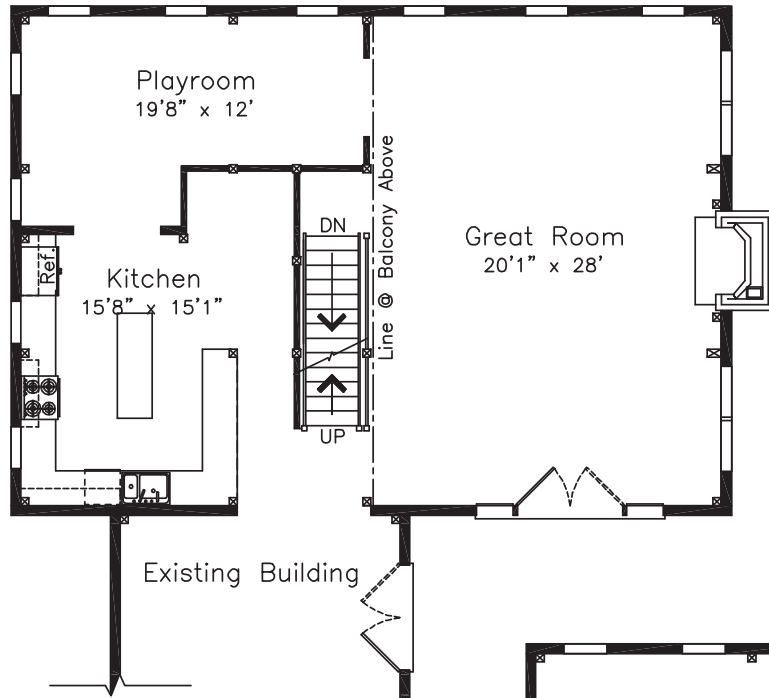


ATTIC

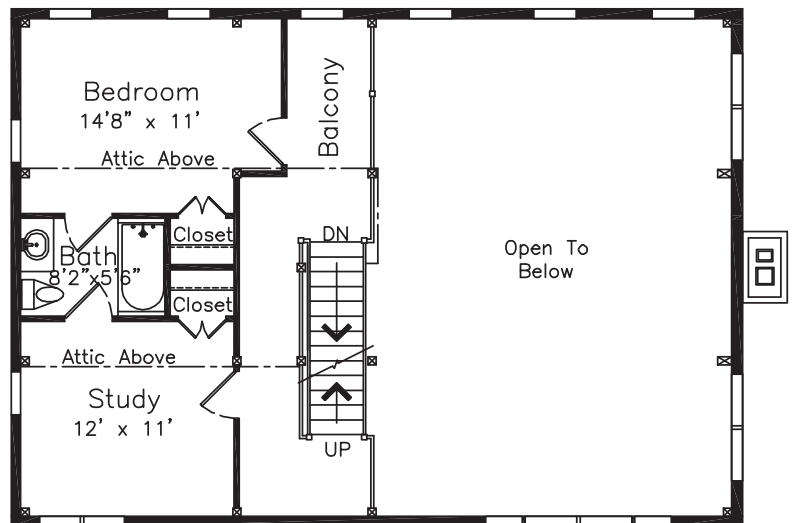


# THE MONT VERNON

## FIRST FLOOR



## SECOND FLOOR



## ATTIC

